

Several large, semi-transparent circles in yellow, white, and purple are scattered across the teal background. A large yellow circle is at the top left, a white circle is below it, and a large purple circle is at the bottom left. Two overlapping light blue circles are on the right side.

DREAM IT, BUILD IT, PLAY WITH IT

What is so special about GRIMM'S products?

Our products are perfectly incomplete because they are meant to invite you to add your own imagination and play freely with them.

Free play is an incredibly valuable treasure for our little ones, because if you give it some space, it happens all by itself and it encourages them in their doing and being.

Those who play freely learn to break frames and are ready for a lifetime of solution creativity.



Small building worlds that go beyond their frames

All our new items come in a frame and are just waiting to burst it together with the imagination of a small or already big child.

With small frame dimensions of 26.5 x 26.5 cm, they are practically hybrids of our large building sets and the perfect evolution of our small world play sets.

Air is what connects them thematically and stimulates the imagination, without being prescriptive.

BUILDING WORLD
DESERT SAND



BUILDING WORLD
CLOUD PLAY



BUILDING WORLD
POLAR LIGHT



PASTEL DUO

Bauwelt Wüstensand

Building World Desert Sand

SPRENG DEN RAHMEN, KLEINE BAUWELT!
Go beyond the frame, little building world!

DREAM IT, BUILD IT, PLAY WITH IT

TIPP: Naturmaterialien lassen die Welt erblühen.
Let it bloom! Natural materials will make your world blossom.

TIPP: ein kleines Stück Klebestreifen um das Schnurende kleben, damit es besser durch die Löcher geht.
Attach a small piece of tape at the end of the string; this will help you get it through the holes.



SPIELEN ODER AUFRÄUMEN?

Play or tidy up?

TIPP: Siehst du die Umrisse? Versuch doch einmal, die Bausteine so wieder in den Kasten zu legen.
Do you see the outlines? Try to put the blocks back into the box like this.

TIPP: Kippt die Bausteine einfach mal wild aus dem Rahmen – und das freie Spiel kann beginnen.
Just lay the blocks on the floor – and the open ended play can begin.





43114

Building World Desert Sand

Bauwelt Wüstensand

26-piece building world (lime/alder), 2 friends (alderwood),
1 string, 1 frame (26,5x26,5cm)

Recommended age: 1+

When the layers of air overlap in the vastness of the desert, the impressive phenomenon of the Fata Morgana is created by mirages. What seemed to be there is suddenly gone, how can that be?

Rich yellow, orange and red tones mixed with natural wood give the Building World Desert Sand a deep warmth. The building materials in a wide variety of shapes allow imaginative free building and complement the GRIMM'S assortment with loving details, such as special robes for the two figures and a mountable, movable door.



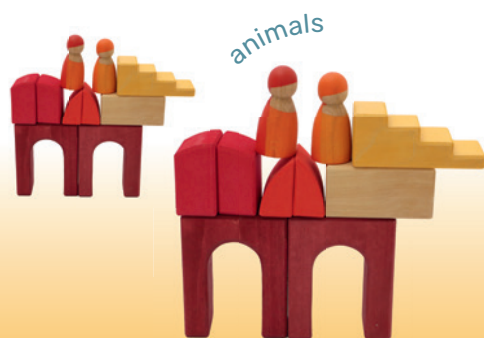
doors to open



animals



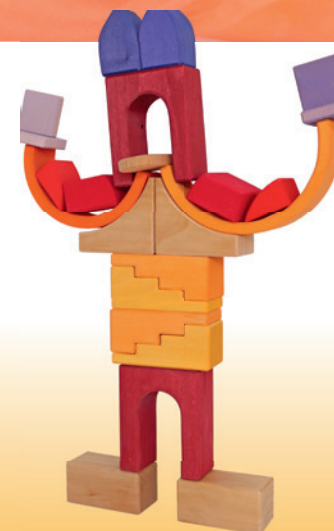
small world play



animals



castles



robots



Bauwelt Wolkenspiel

Building World Cloud Play



TIPP: Watte bringt Schlösser zum Schweben.
Cotton Wool makes castles float on clouds.

TIPP: Naturmaterialien lassen die Welt erblühen.
Let it bloom! Natural materials will make your world blossom.

TIPP: Ein kleines Stück Klebestreifen um das Schnurende kleben, damit es besser durch die Löcher geht.
Attach a small piece of tape at the end of the string, this will help you get it through the holes.

SPRENG DEN RAHMEN. KLEINE BAUWELT!
Go beyond the frame, little building world!

WITH IT, DREAM IT, BUILD IT, PLAY IT.



TIPP: Kippt die Bausteine einfach mal wild aus dem Rahmen – und das freie Spiel kann beginnen.
Just lay the blocks on the floor – and the open ended play can begin.

SPIELEN ODER AUFRÄUMEN?
Play or tidy up?

TIPP: Siehst du die Umrisse? Versuch doch einmal, die Bausteine so wieder in den Kasten zu legen.
Do you see the outlines? Try to put the blocks back into the box like this.





43113

Building World Cloud Play

Bauwelt Wolkenspiel

24-piece building world (lime/alder), 2 friends (lime/alder),
1 string, 1 frame (26,5x26,5cm)

Recommended age: 1+

Clouds are formed when evaporated water rises with the air and condenses there. Their incredible lightness can only be guessed at.

The pastel tones of Building World Cloud Play reflect this lightness and lend the solid wood a harmonious delicacy. The building materials in a wide variety of shapes allow imaginative free building and complement the GRIMM'S range with their loving details, such as flower-like roundings, asymmetrical breaks and a mountable, movable door.



Bauwelt Polarlicht

Building World Polar Light

SPRENG DEN RAHMEN,
KLEINE BAUWELT!
Go beyond the frame, little building world!





43115

Building World Polar Light

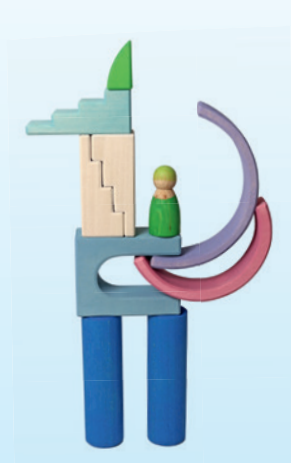
Bauwelt Polarlicht

20-piece building world (lime), 2 friends (alderwood),
1 string, 4 Giant Acrylic Glitter Stones, 1 frame (26,5x26,5cm)

Recommended age: 3+

Polar Lights are caused by a collision of charged particles from the sun and gas particles in the air. As colourful veils, they adorn the sky in the polar regions and dance as if by magic.

The cool nuances of blue and white give the Building World Polar Lights an icy and fairytale-like appearance. The building materials in a wide variety of shapes allow imaginative free building and complement the GRIMM'S assortment with loving details, such as a hand-painted canopy, shiny gems and a mountable, movable door.





Pastell Duo
Pastel Duo
40 Teile/Pieces

Das Pastell Duo liefert wunderschönes Baumaterial in zwei geometrischen Grundformen – und zwar alles in doppelter Ausführung.

Die Dreiecke in den zwei verschiedenen Holzarten Erle und Linde und die pastellfarbenen rechteckigen Plättchen harmonisieren mit ihren Gegensätzen wunderbar.

Damit ergänzt das Pastell Duo nicht nur die Baumaterialien unserer Pastellserie perfekt, sondern lädt auch dazu ein, nach gleichen Farben und Formen zu sortieren und viele weitere Spielmöglichkeiten zu entdecken.



The Pastel Duo delivers beautiful building material in two basic geometric shapes – and all in duplicate.

The contrasting appearance of the triangles in the two different types of wood, alder and lime, and the pastel coloured rectangular tiles harmonise wonderfully.

Thus, the Pastel Duo not only perfectly complements the building materials of our pastel series, but also invites you to sort by the same colours and shapes and explore so many more ways to play with it.

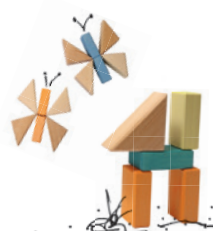


Colour sorting

4 X DUO
2 Farbwellen
2 Bausteine pro Farbe
2 Holzarten
2 Formen



Domino



Different buildings



DREAM IT. BUILD IT. PLAY WITH IT.

4 X DUO
2 colour worlds
2 blocks per colour
2 types of wood
2 shapes

Flowers & animals



GRIMM'S

PERFECT COMBINATION



Small world play



TIPP:
Es gibt zahllose Möglichkeiten, die Bausteine wieder in den Rahmen zu legen.
There are countless ways to put the bricks back into the frame.

EINFACH BESONDERS
Geometrische Grundformen sind überall um uns herum. So einfach und doch so besonders. Du wirst staunen, was sich aus ihnen alles zaubern lässt.

SIMPLY SPECIAL
Basic geometric shapes are all around us. So simple and yet so special. You'll be amazed what can be made out of them.

SPIELEN ODER AUFRÄUMEN?

Play or tidy up?

TIPP:
Siehst du die Umrisse? Versuch doch einmal, die Bausteine so wieder in den Rahmen zu legen.

Do you see the outlines? Try to put the blocks back into the box like this.

GRIMM'S



43112

Pastel Duo

Pastell Duo

40-piece building set (lime/alder)
1 frame (26,5x26,5cm)

Recommended age: 1+

The Pastel Duo delivers beautiful building material in two basic geometric shapes - and all in duplicate.

The contrasting appearance of the triangles in the two different types of wood, alder and lime, and the pastel coloured rectangular tiles harmonise wonderfully.

Thus, the Pastel Duo not only perfectly complements the building materials of our pastel series, but also invites you to sort by the same colours and shapes and explore so many more ways to play with it.

flat lays



constructions



animals



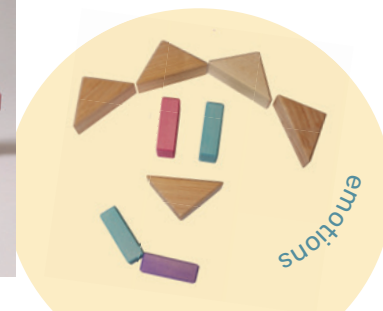
flowers



colour sorting



emotions



buildings



domino



PERFECT COMBINATION
WITH ...



